



Gulf Research Center
K n o w l e d g e f o r A l l

The Gulf Research Center Financials

Jeddah – Geneva – Brussels – Cambridge– Dubai⁽²⁰⁰⁰⁻²⁰¹⁰⁾

For the Period of 25 Years

2000 - 2024

Financials

The GRC financials have been compiled for the period 2000-2024. The consolidated financial statement is a compilation of financial data from the following GRC entities:

- Gulf Research Center Foundation, Geneva
- Gulf Research Center Foundation, Brussels
- Gulf Research Centre Cambridge, UK
- Gulf Research Center, Jeddah
- Gulf Research Center, Dubai (2000-2010)

The consolidated statement presents a summarized view of information abstracted from the annual financials of the individual GRC entities.

The primary source of GRC funding is Dr. Abdulaziz Sager, GRC Founder and Chairman.

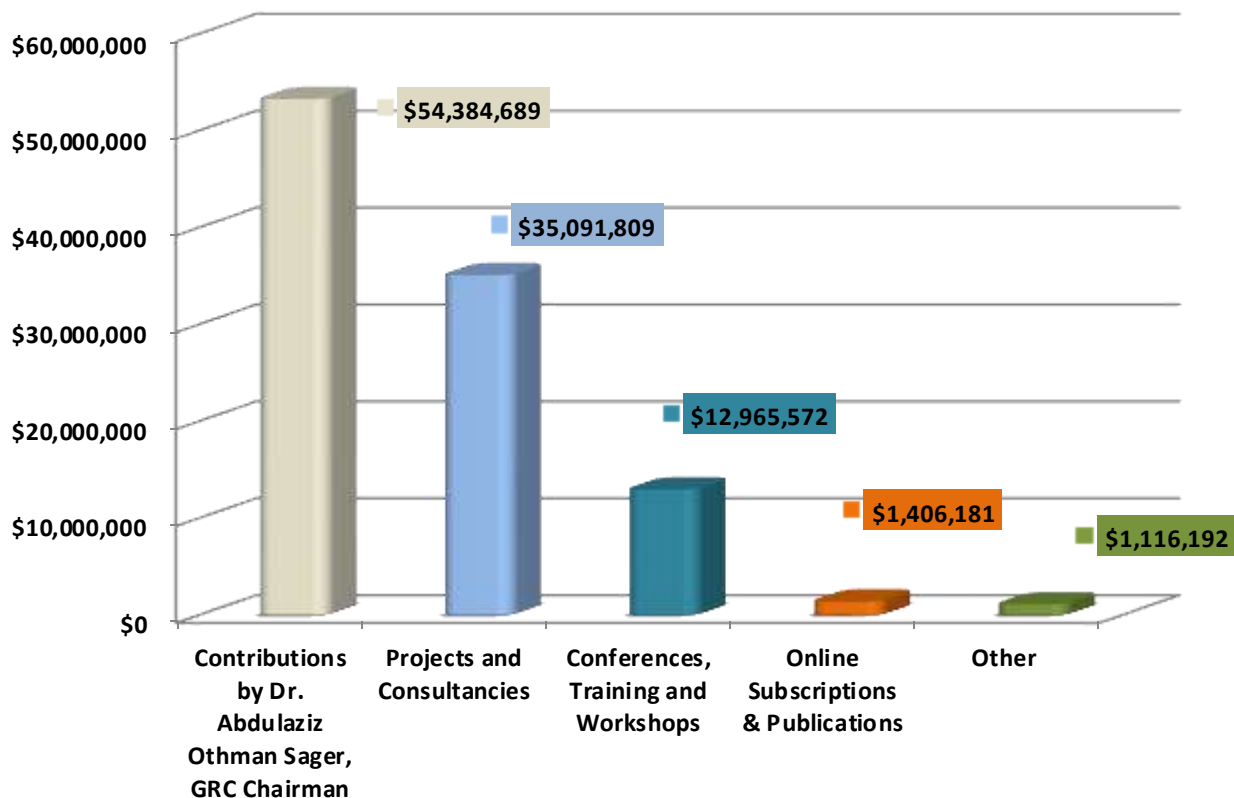
Consolidated Financial Statement of Gulf Research Center

Consolidated GRC Financial Statements -- (Unaudited)

Consolidated Statement of Activities for
Period - 01 Jan 2000 to 31 Dec 2024

Description	Total
	All amounts in USD
Revenues	
Contributions by Dr. Abdulaziz Othman Sager, GRC Chairman	\$53,263,041
Projects and Consultancies	\$35,091,809
Conferences, Training and Workshops	\$12,965,572
Online Subscriptions & Publications	\$1,406,181
Other	\$1,116,192
Total Revenue	\$103,842,795

INCOME CLASSIFIED AS CAPITAL AND REVENUE GENERATED

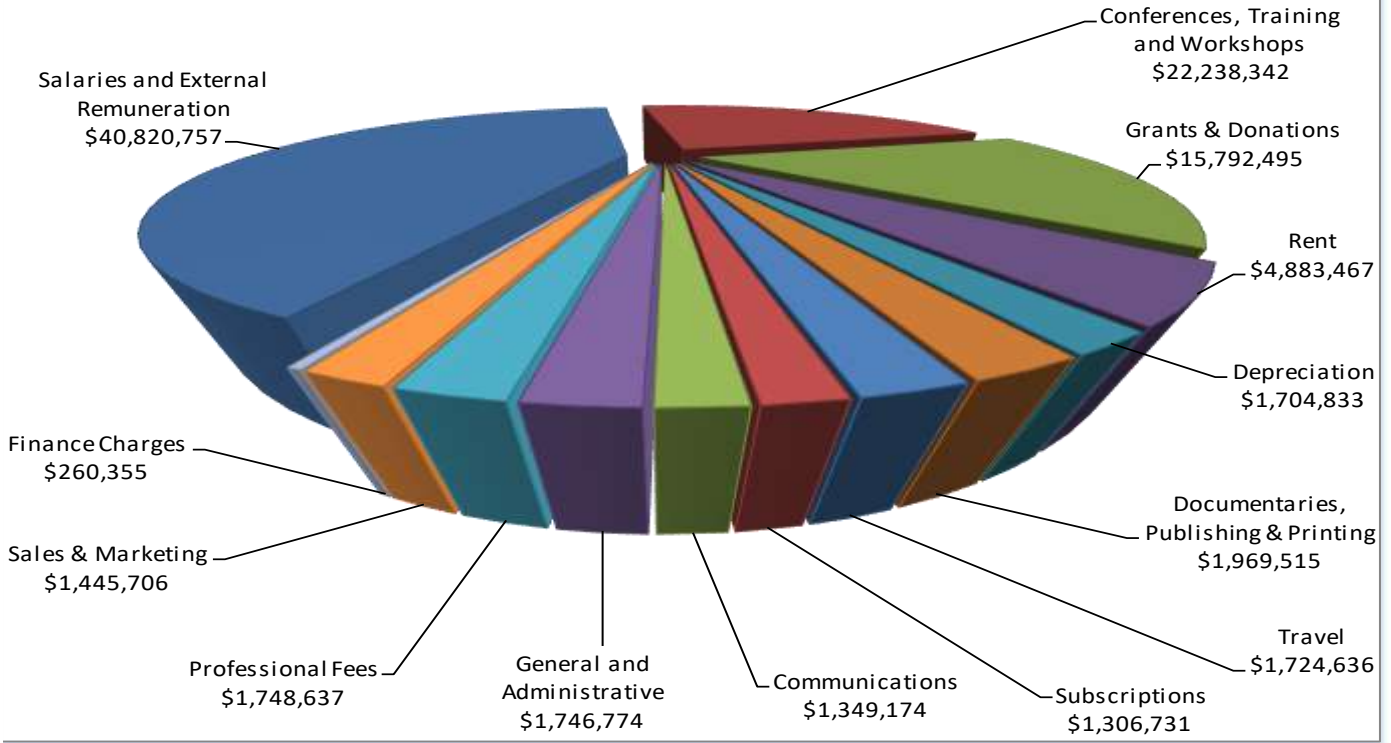


Consolidated GRC Financial Statements -- (Unaudited)

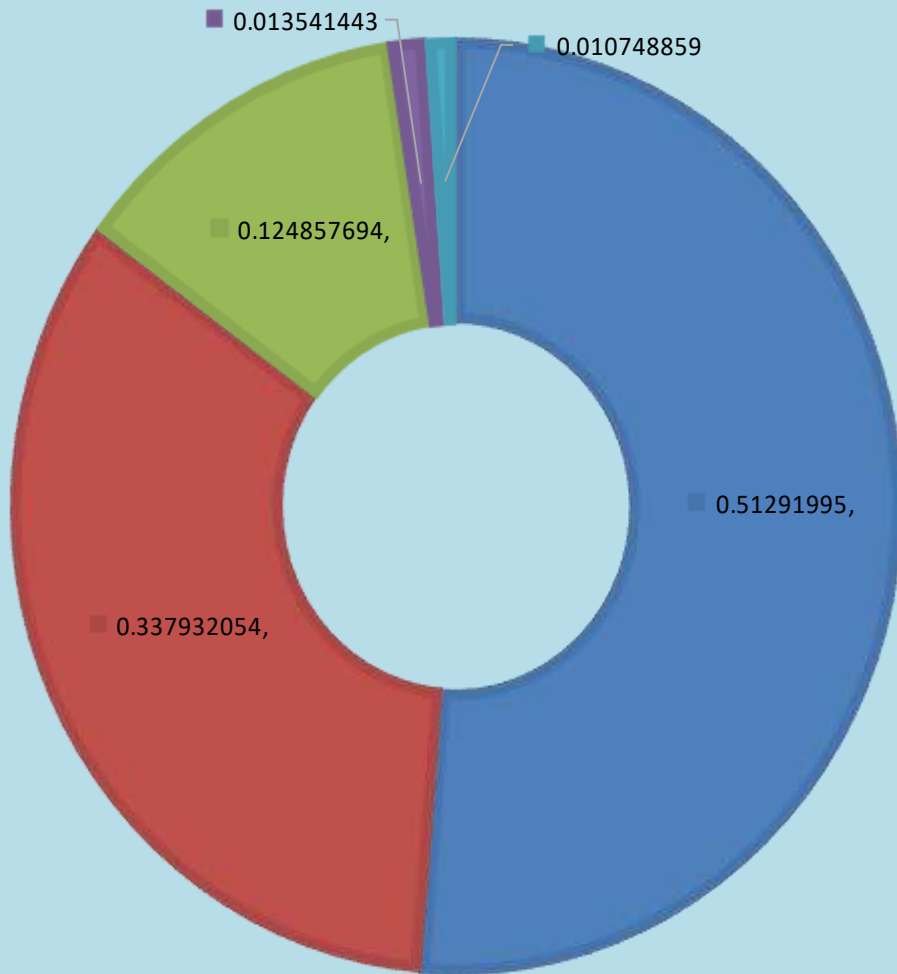
Consolidated Statement of Activities for
 Period - 01 Jan 2000 to 31 Dec 2024

Operating Expenses	All Amount in USD
Salaries and External Remuneration	\$40,820,757
Conferences, Training and Workshops	\$22,238,342
Grants & Donations	\$15,792,495
Rent	\$4,883,467
Depreciation	\$1,704,833
Documentaries, Publishing & Printing	\$1,969,515
Travel	\$1,724,636
Subscriptions	\$1,306,731
Communications	\$1,349,174
General and Administrative	\$1,746,774
Professional Fees	\$1,748,637
Sales & Marketing	\$1,445,706
Finance Charges	\$260,355
Total Operating Expenses	\$96,991,423

EXPENSE CLASSIFICATION BASED ON CATEGORIES



SOURCES OF INCOME IN PERCENTAGE



- Contributions by Dr. Abdulaziz Othman Sager, GRC Chairman
- Projects and Consultancies
- Conferences, Training and Workshops
- Online Subscriptions & Publications
- Other

Consolidated GRC Financial Statements -- (Unaudited)

Consolidated Statements of Financial Position

01 July 2000 to 31 Dec 2024

Particulars	Total
	All amounts in USD
Assets:	
Long-term assets	
Property and equipment net	\$97,573
Total long-term assets	\$97,573
Current assets	
Trade and other receivables	\$126,758
Prepayments / advances	\$42,025
Investments	\$1,082,525
Deposits	\$25,835
Cash in hand and at bank	\$936,075
Total current assets	\$2,213,218
Total assets	\$2,310,791
Liabilities:	
Current liabilities	
Trade and other payables	\$2,221
Advance Income	\$606,208
Accrued expenses	\$88,415
Total current liabilities	\$696,844
Net Assets	\$1,613,947
Net Equities/Reserves and Surplus	\$1,613,947
Total Liabilities & Equities	\$2,310,791

NOTE:

This is a consolidated financial statement for the following GRC entities:

Gulf Research Center Foundation Geneva ----- Gulf Reserch Center Foundation Brussels

Gulf Research Centre Cambridge ----- Gulf Research Center – Jeddah ----- Gulf Research Center – Dubai

This statement is a compilation of the financial activities of the individual GRC entities.

The primary source of GRC funding is Dr. Abdulaziz Sager, GRC Founder and Chairman

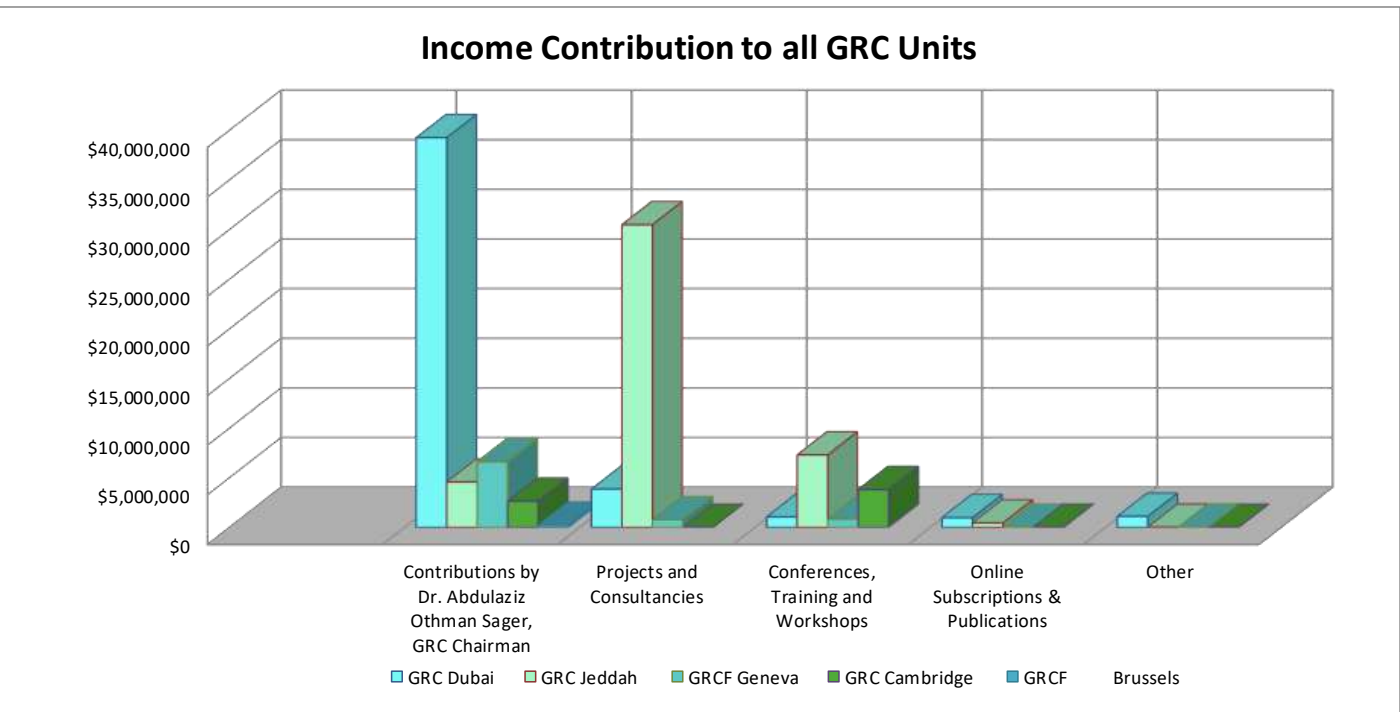
Consolidated Financial Statement of Gulf Research Center (Entity-based)

**Jeddah – Geneva – Brussels – Cambridge– Dubai⁽²⁰⁰⁰⁻²⁰¹⁰⁾
For the Period of 25 Years**

Consolidated GRC Financial Statements -- (Unaudited)

Consolidated Statement of Activities for the period
01 Jan 2000 to 31 Dec 2024

Revenues	GRC Dubai	GRC Jeddah	GRCF Geneva	GRC Cambridge	GRCF Brussels	Total
Contributions by Dr. Abdulaziz Othman Sager, GRC Chairman	\$39,246,025	\$4,562,689	\$6,609,706	\$2,632,261	\$212,360	\$53,263,041
Projects and Consultancies	\$3,846,363	\$30,476,367	769,078.47	-		35,091,808.88
Conferences, Training and Workshops	\$1,046,116	\$7,288,062	\$831,268	\$3,800,126		\$12,965,572
Online Subscriptions & Publications	\$971,040	435,141.33	-	-		1,406,181.24
Other	\$1,094,835	\$7,319	\$11,327	\$2,711		\$1,116,192
Total Revenue	\$46,204,380	\$42,769,578	\$8,221,379	\$6,435,097	\$212,360	\$103,842,795

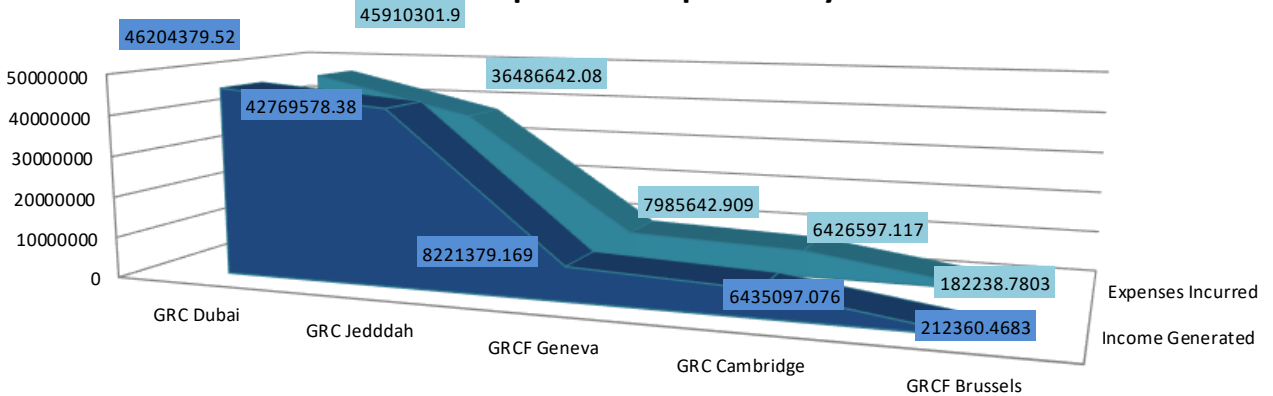


Consolidated Statement of Activities for

Period - 01 Jan 2000 to 31 Dec 2024

Description	GRC Dubai	GRC Jeddah	GRCF Geneva	GRC Cambridge	GRCF Brussels	Total
Operating Expenses						
Salaries and External Remuneration	\$25,373,055	\$10,225,538	\$4,728,263	\$421,689	\$72,212	\$40,820,757
Conferences, Training and Workshops	\$5,953,745	\$10,003,490	\$426,517	\$5,820,580	\$34,010	\$22,238,342
Grants & Donations	\$2,899,944	\$12,611,347	\$281,205	-		\$15,792,495
Rent	\$3,242,739	\$350,000	\$1,263,502	-	27,225.70	\$4,883,467
Depreciation	\$1,606,628	\$17,124	\$81,081	-		\$1,704,833
Documentaries, Publishing & Printing	\$1,477,004	\$492,511	-	-		\$1,969,515
Travel	\$951,793	\$228,721	\$539,667	-	4,454.18	\$1,724,636
Subscriptions	\$1,306,434	-	-	-	296.73	\$1,306,731
Communications	\$1,062,173	\$105,215	\$178,930	-	2,856.17	\$1,349,174
General and Administrative	\$698,399	\$811,298	\$207,808	\$22,587	\$6,683	\$1,746,774
Professional Fees	\$633,538	\$731,586	\$200,875	\$148,462	\$34,176	\$1,748,637
Sales & Marketing	\$526,255	909,813.33	-	\$9,638		\$1,445,706
Finance Charges	\$178,593	-	\$77,795	3,641.13	325.67	\$260,355
Total Operating Expenses	\$45,910,302	\$36,486,642	\$7,985,643	\$6,426,597	\$182,239	\$96,991,423

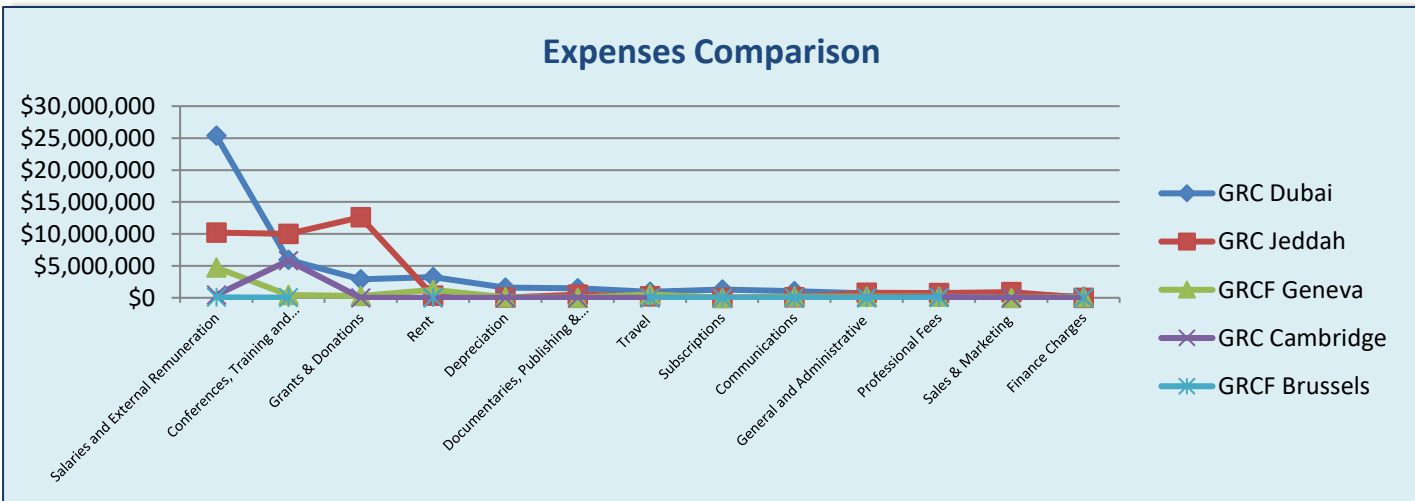
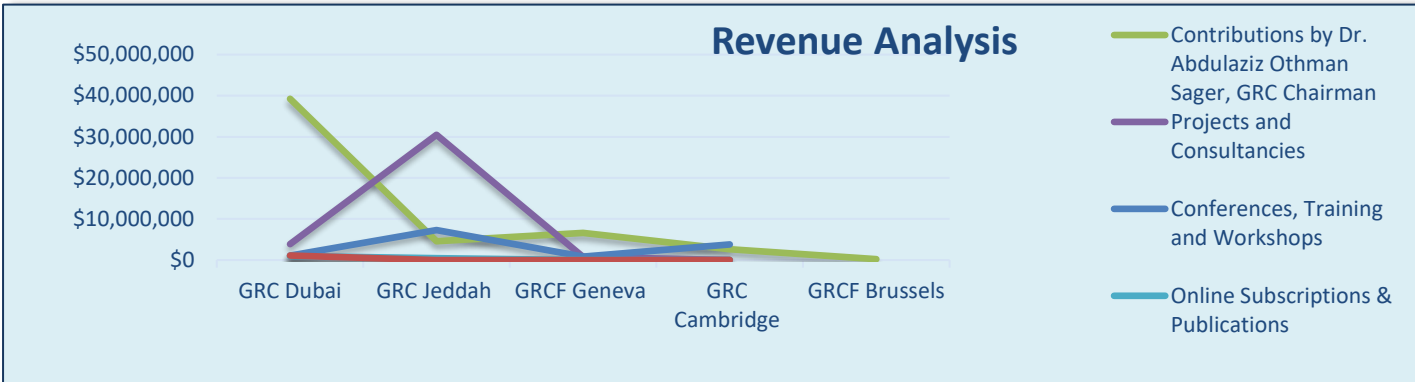
Income and Expense Comparison by GRC Unit



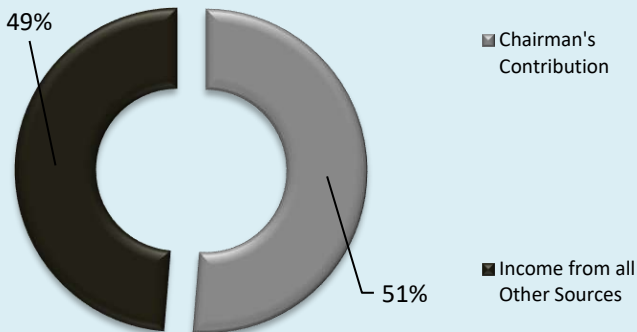
	GRC Dubai	GRC Jeddah	GRCF Geneva	GRC Cambridge	GRCF Brussels
Income Generated	46204379.52	42769578.38	8221379.169	6435097.076	212360.4683
Expenses Incurred	45910301.9	36486642.08	7985642.909	6426597.117	182238.7803

Revenue and Expense Analysis for all GRC Units (2000 – 2024)

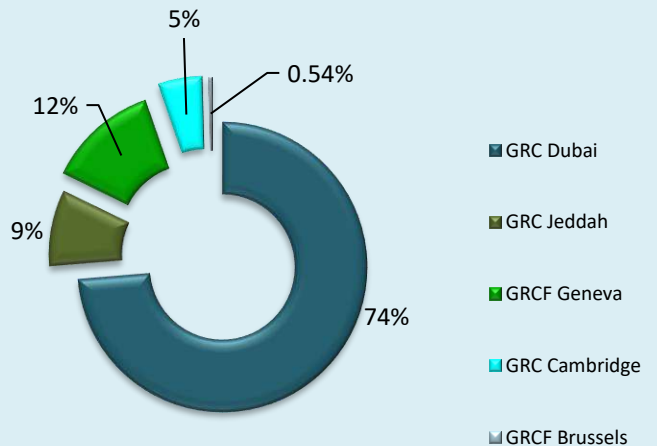
Summary of total revenues and expenses for GRC Jeddah, Saudi Arabia, GRCF Geneva, Switzerland, GRCF Brussels, Belgium, and GRC Cambridge, UK & GRC Dubai, UAE during the period 2000 to 2024:



Income Analysis (Chairman's Contribution and Income from Other Sources)



Chairman's Contribution to all GRC Offices





Gulf Research Center
K n o w l e d g e f o r A l l